

BERTSCHenergy

Power plants
Process equipment

90
YEARS

TRADITION
QUALITY
KNOW-HOW
SINCE 1925

KVA Bern Forsthaus – Biomass CHP

Reference Sheet



BERTSCH

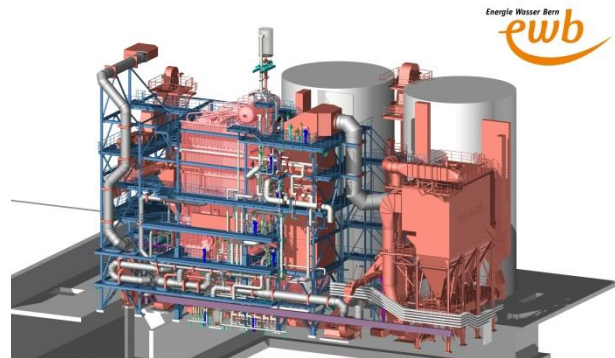
TRADITION, QUALITY, KNOW-HOW. SINCE 1925

»Biomass-fueled power station with atmospheric fluidized bed - Commissioning 4th quarter 2012«

This biomass CHP is part of the newly built „Forsthaus West“ power station in Bern, Switzerland, which further includes the waste incineration plant and a gas turbine power plant (also built by BERTSCHenergy).

The biomass storage was realized via concrete silos with a bottom discharge.

In the atmospheric fluidized bed firing untreated biomass as well as waste wood with a water content from 20 to 50% is incinerated. The fluidized bed firing untreated biomass as well as waste wood with a water content from 20 to 50% is incinerated. The fluidized bed firing is integrated part of a two pass membrane wall boiler construction. The flue gas downstream the boiler is further cooled in a high pressure economizer. The firing is equipped with a SNCR installation plant, because of very



TECHNICAL DATA

» Thermal power	28,4 MW
» Max. continuous rating	32,2 t/h
» S.H. steam pressure	75 bar(a)
» S.H. steam temperature	485 °C



SCOPE OF SUPPLY

» Storage area (silo) & fuel handling
» Atmospheric fluidized bed combustion (AFBC)
» S.H. steam boiler
» Fabric filter
» SNCR
» Combustion air & flue gas fans
» Steel structure
» Basics for DCS & PCS

