

BERTSCHenergy

Power plants
Process equipment

90
YEARS

TRADITION
QUALITY
KNOW-HOW
SINCE 1925

Plant in Aubrugg

Reference Sheet



BERTSCH

TRADITION, QUALITY, KNOW-HOW. SINCE 1925

» Optimisation of plant operation «

Stabilisation of driving without losses at full load and partial load.

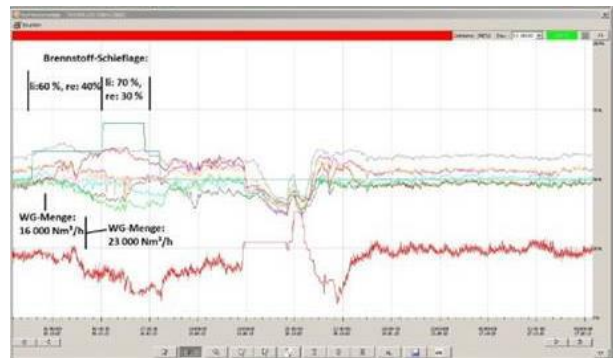
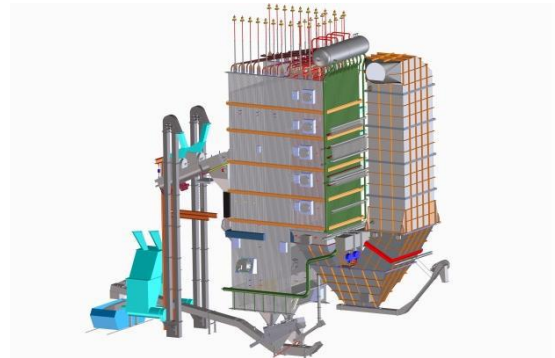
Improving of combustion in load range.

Configuration on minimal partial load.

Configuration of boiler operation and optimisation of operating values.

Plant operation subject to NOX-emission limits without use of SNCR-plant.

Additionally a remote control happened.



TECHNICAL DATA

- » Procedure: solid-fuel fired steam boiler
- » Boiler type: 4-pass vertical boiler with atmospheric fluidised bed combustion
- » Parameter: 41,5 MWe
Wood chips (W30-W53)
46,5 t/h, 80 bar, 500°C

