

BERTSCHenergy

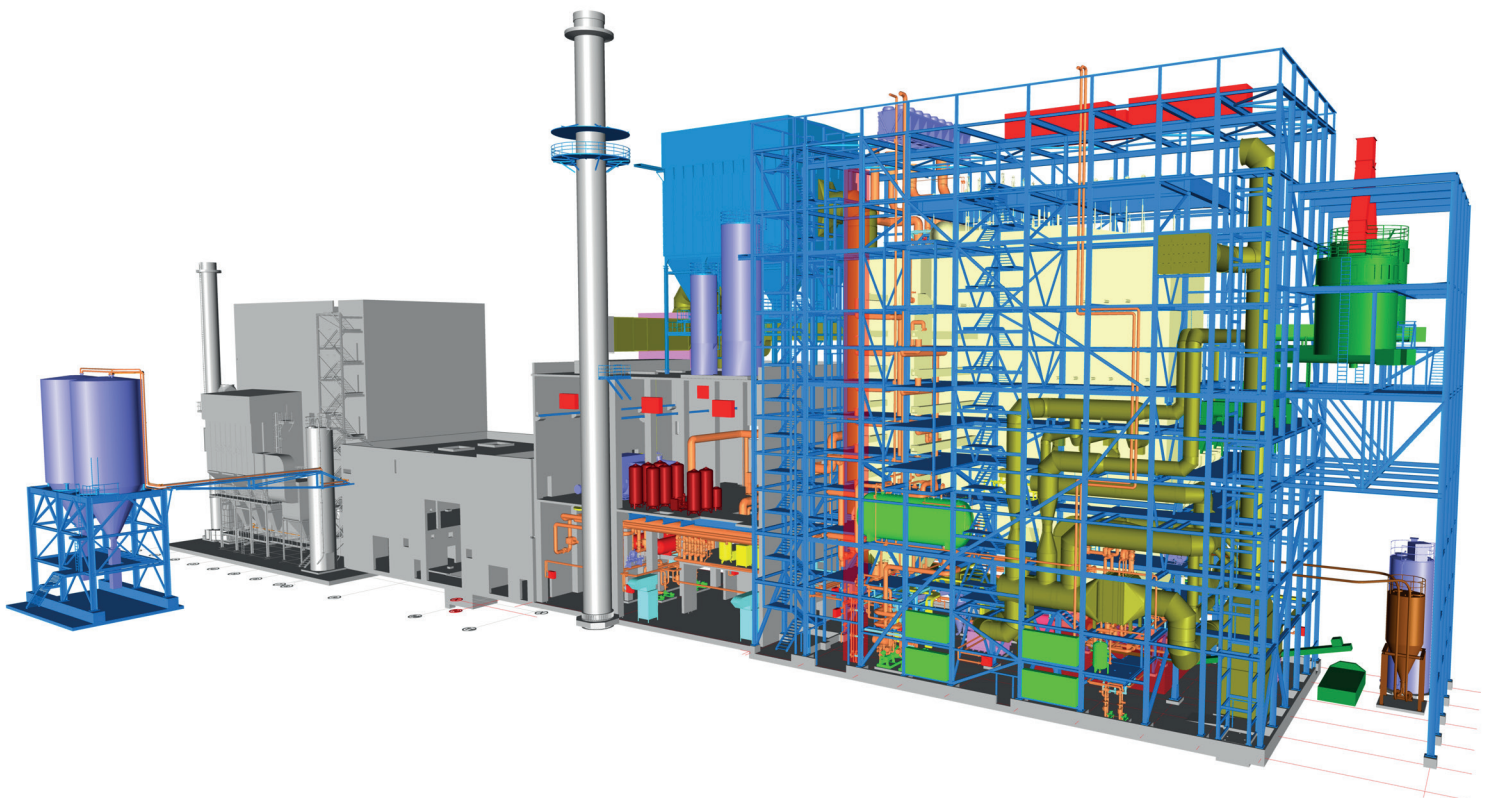
Power Plants
Process Equipment

95
YEARS

TRADITION
QUALITY
KNOW-HOW
SINCE 1925

Biomass Thermal Power Plant Kronospan II

Reference Sheet



BERTSCH

TRADITION, QUALITY, KNOW-HOW. SINCE 1925.

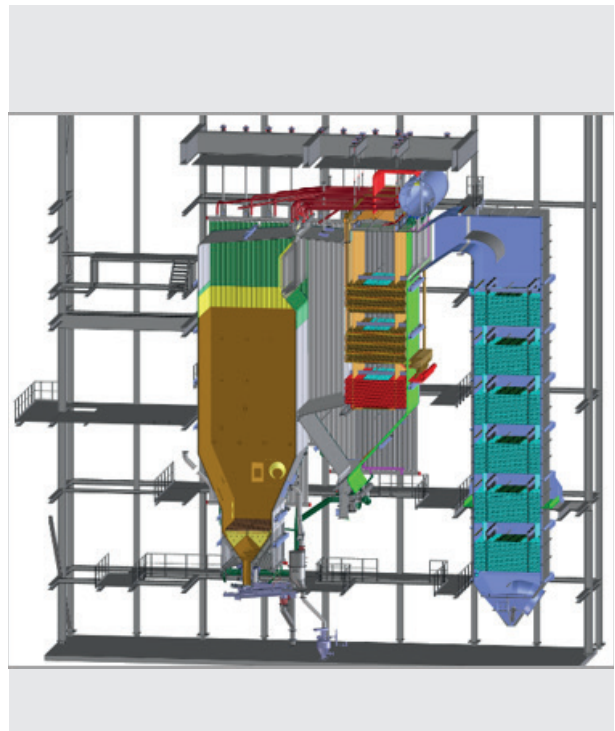
» Biomass fired power plant with bubbling fluidized bed technology«

Only few months after start of production of CHP Sa-nem 1 (CHP with grate firing for barks and production residues), BERTSCHenergy was awarded the contract for another 103MW CHP plant to produce additional electricity and heat at the same site.

For this project, the BFB technology has been chosen which features high fuel flexibility and efficiency. The plant is mainly fired with demolition wood A3 and A4 according to the German „Altholzverordnung“. Additionally, wood dust which accrues during raw material preparation (for chipboard production) and fuel preparation can be injected directly in the combustion chamber. An SNCR and a dry flue gas cleaning system is foreseen to meet the emission limits.

The CHP supplies up to 21MW of electricity, 15MW on the 18bar(a) line to produce secondary steam and 60MW of hot water at 140°C. Additionally, an extraction possibility for HP steam to heat thermal oil is foreseen.

The scope of supply includes the complete power plant with auxiliaries excluding the civil works as well as fuel preparation and storage. Additionally, numerous integration works for the complete production site have been accomplished, demonstrating the BERTSCHenergy focus on client needs.



TECHNICAL DATA

» Thermal power nominal	100 MW
» Electrical power nominal	21 MW
» Steam flow (MCR)	130 t/h
» Steam pressure	63 bar (a)
» Steam temperature	450° C
» Fuel	Waste wood A1-AIV

SCOPE OF SUPPLY

» Fuel dosing system
» Bubbling fluidized bed firing system
» Steam boiler
» Flue gas treatment with additive dosing system
» Operation and control system
» Turn-key solution
» Balance of plant and turbine island

