

**BERTSCH**energy

Power Plants  
Process Equipment

95  
YEARS

TRADITION  
QUALITY  
KNOW-HOW  
SINCE 1925

# Biomass Thermal Power Plant in Sisseln/CH

Caliqua AG



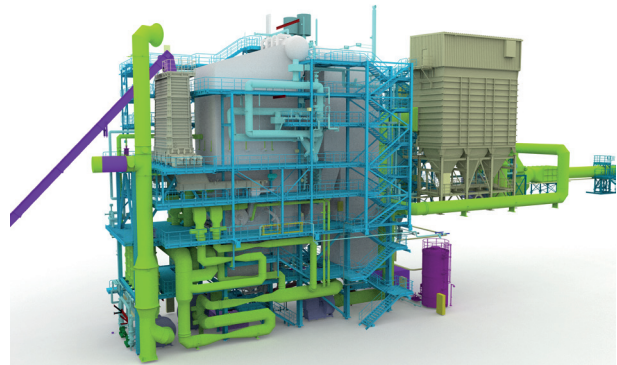
**BERTSCH**

TRADITION, QUALITY, KNOW-HOW. SINCE 1925.

## » Biomass fired power plant with bubbling fluidized bed technology«

The BFB plant will combust local fuels such as logging residues and residues from saw mills to supply HP steam to a steam turbine. The BFB technology was chosen for its high efficiency, fuel flexibility and low maintenance cost. Optimizing the electrical output, the steam parameters have been set to 105bar / 525°C.

Further, the BERTSCHenergy SNCR system which features low NO<sub>x</sub> emissions without additional water injection (and thus losses) is installed. Applying a low temperature heat exchanger allows a further reduction of the flue gas losses and will thus increase the overall HP steam output and efficiency.



### TECHNICAL DATA

» Firing capacity	36.3 MW
» Steam flow (MCR)	45 t/h
» Steam pressure	105 bar (a)
» Steam temperature	525°C
» Fuel	Wood chips, bark, saw-mill waste W30 - W60

### SCOPE OF SUPPLY

» Fuel dosing system
» Bubbling fluidized bed firing system
» Steam boiler
» Flue gas treatment
» Operation and control system

