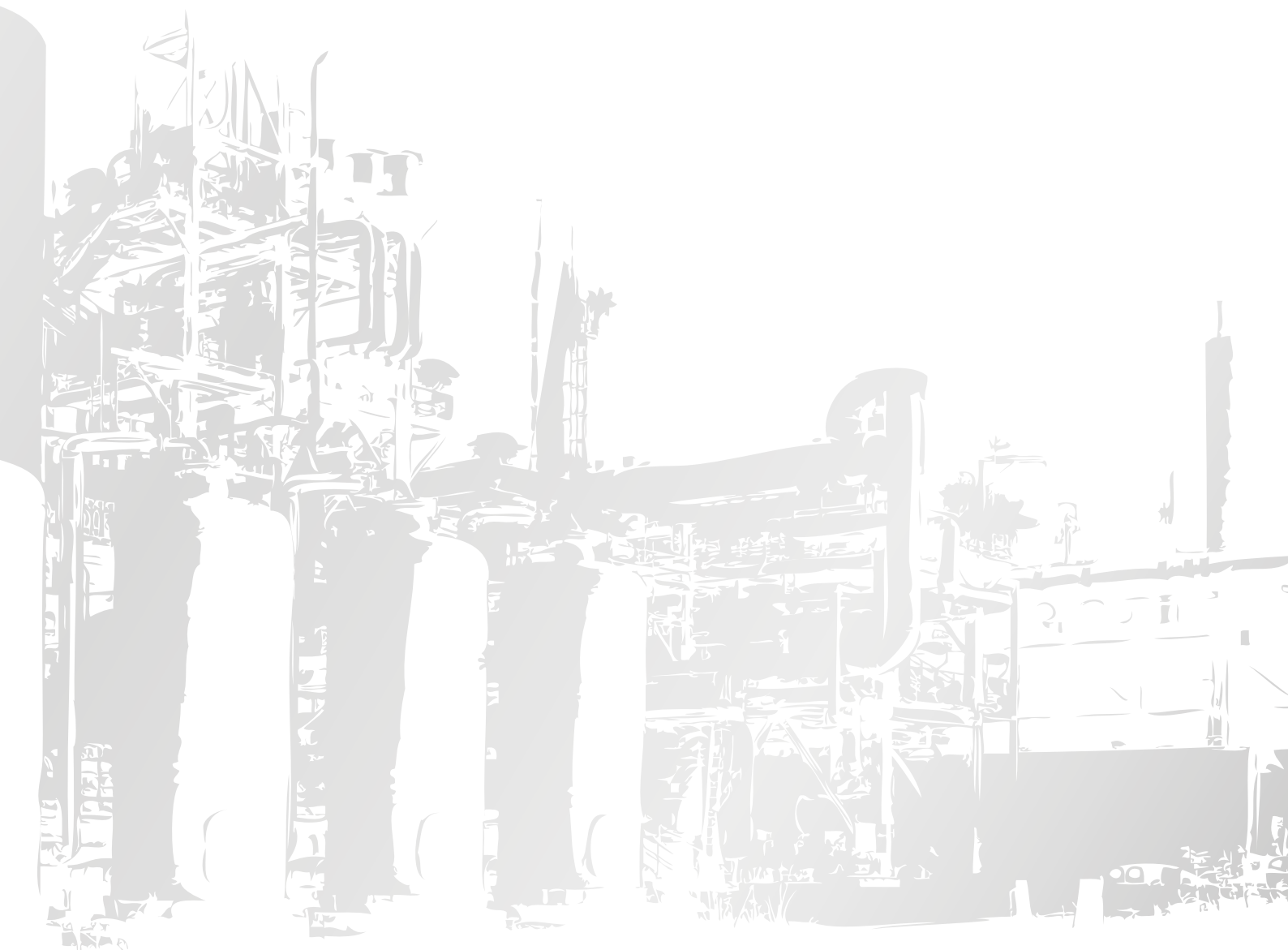


95
YEARS

TRADITION
QUALITY
KNOW-HOW
SINCE 1925

BERTSCH

TRADITION, QUALITY, KNOW-HOW. SINCE 1925





»Every generation draws on the knowledge of its predecessors and builds upon this knowledge with its own experience. We learn from and use our experiences to the benefit of our customers. Each division in the BERTSCHgroup focusses on its own expertise, creating a strong company as a whole. **Our time is a time full of changes that only favours those who are prepared to face such changes.** We are ready for a successful future.«

Hubert Bertsch
BERTSCHgroup



»**Know-how** leads to a comprehensive solution«

We provide our customers with innovative solutions by using our own technology, our own design and engineering as well as our comprehensive knowledge.

»**Quality** is the basis for customer satisfaction«

Our understanding of quality exists in parallel with the high requirements of the market. The only way to ensure the comprehensive quality of our plants and components is through a sophisticated quality of our processes and service.

»Innovation is the beginning of a new **tradition**«

Tradition includes strong values to which we feel committed. Values such as reliability as a partner, excellent product quality, and high innovative capabilities for further development. This connects us to the generations before us as well as to future generations.



Power plant technology
Bertsch Energy GmbH & Co KG



Dairy plant technology
Bertsch Foodtec GmbH



Meat production technology
Bertsch-Laska Produktions- und Handels-GmbH

»Customisation from planning to implementation«

Know-how is one of the key factors for customised solutions that impress our customers worldwide and make BERTSCH the ideal partner for demanding tasks.

Concentrated BERTSCH know-how is an essential link in a value chain that extends from the initial concept to the installation of an entire system. Our own technologies and our own design and engineering are the tools that allow us to implement the visions and concepts of our customers in various fields and industries.

BERTSCHgroup

Bertsch Holding GmbH

BERTSCHenergy

Bertsch Energy GmbH & Co KG

BERTSCHfoodtec

Bertsch Foodtec GmbH

BERTSCHlaska

Bertsch-Laska Produktions- und Handels-GmbH



»**High innovative capacity** is created through years of experience and made us to specialists in the dairy and cheese industry.«

BERTSCHfoodtec

»An innovative approach to energy is crucial for an **independent technology provider**.«

BERTSCHenergy

»A customised solution is always paved with **technical expertise** and leads to our customers' success.«

BERTSCHlaska

From left to right: Dr. Christian Linder, Gernot Kranabetter, Christoph Hueber, Walter Schuchter, Hubert Bertsch, Brigitte Bertsch, Hubert Hackl, Stefan Kuzmits



» Competence and experience

» BERTSCHenergy – independent technology for energy projects«

BERTSCHenergy is one of the leading companies in international power plant engineering and construction. In addition, we offer a wide variety of waste heat recovery systems and equipment for the chemical and petrochemical industries.

We supply to our customers comprehensive solutions from plant design and engineering as well as procurement, manufacturing and installation through to commissioning of turnkey power plants – all from a single source. As different as the requirements may be, our highly qualified employees develop a customised solution for any task.

BERTSCHenergy has been building integrated power plants for industrial companies and energy suppliers for over 50 years by using its experience and innovative capacity.

» BERTSCHenergy | Range of services

- » Energy expertise
- » Power plants
- » Process equipment
- » Service



» High potential for innovation

»BERTSCHfoodtec – a competent partner for the modern dairy industry«

BERTSCHfoodtec is your competent partner in the dairy industry. The careful treatment of milk, the highest technical standard and first-class quality form the basis of our dairy and cheese production plants.

Specialisation, investment and a long-lasting pioneering spirit developed the family-owned company into an internationally recognised partner to the dairy and cheese industry. BERTSCHfoodtec specialists support their customers from the initial consultation and design to the planning, installation and commissioning of customised plants and equipment – dealing with the integration of individual components into a production line as well as a comprehensive solution. Many years of expertise, high-quality components and advanced process technology guarantee optimal product results and first-class quality.

» BERTSCHfoodtec | Range of service

- » BERTSCH universal cheese vats
- » Cheese production and storage plants
- » Salt bath systems for loading and unloading
- » Cheese plants for small production facilities
- » Dairy plants
- » CIP cleaning equipment
- » Installation and service



» Technical expertise

» **BERTSCHlaska** –
customised and flexible
solutions for the meat
industry«

The strength of BERTSCHlaska as a competent and flexible partner for the meat industry lies in its individuality. This ranges from supplying individual machines to the design and supply of complete plants, including installation and commissioning, training and technological support.

BERTSCHlaska solutions are based exclusively on the requirements and needs of its customers. These customised systems and special machinery for the meat, sausage, poultry and fish industry performed successfully despite a hard international competition. As part of the BERTSCHgroup, BERTSCHlaska – with its headquarters in Vienna – can look back on a long and successful history. With its representatives at all sales locations, customer proximity is implemented literally: always as quickly as possible and using all local expertise.



» BERTSCHlaska | Range of services

- » Project planning, financing solutions and service
- » Slaughter lines, tubular track systems, cutting technology
- » Production of sausage, special meat and semi-finished products
- » Thermal treatment
- » Packaging and warehouse logistics
- » Refrigeration technology
- » Hygiene
- » Supplies and accessories



» Quality

»BERTSCH stands for quality«

The challenges facing global companies are becoming increasingly complex. The solutions needed require a comprehensive approach. Therefore, the BERTSCHgroup provides central services in all fields of expertise, such as development, production, customer service and sales. The goal is to achieve peak results with great added value. Our process and product performances represent the well-known high quality concept for safety, innovation and reliability that our customers know and appreciate.

Quality is defined in the BERTSCHgroup in quality management as an overriding guiding principle for production that incorporates authorisations, certifications and the training of our younger employees in our own training workshop. It is the combination of engineering expertise and our own production that enables us to achieve perfect quality management and the production of competitive products.

Delivering first-class components is our top priority. The core competences at the Nüziders manufacturing site lie in the production of thick-walled components using sophisticated materials. The Hörsching manufacturing site creates perfection in stainless steel for customised products – designed, calculated and constructed by practice-orientated systems engineers.

» Prime quality in all fields of expertise

- » Project development as a basis for your success
- » Inhouse engineering ensures customised solutions
- » Innovative development of our own technologies
- » Experienced project managers organise smooth processes
- » Own manufacturing facilities ensure high-quality products
- » Highest demands on quality, safety and environmental protection
- » International service

» Service

»**Service** is being able to see everything through the eyes of the customer«

This philosophy means that our range of services is in line with our customers: constructive, personal and comprehensive. The focus is on customised projects in accordance with customer requests, as well as a first-class quality over its entire lifetime. The result is a long-lasting, successful customer relationship.

We recognise expert service and personal consultation and support as the crucial accompanying factors in meeting customer expectations. This includes target-orientated participation in project development and design, as well as financial issues – from feasibility studies through to project financing support. Moreover, BERTSCH offers a wide range of aftersales services in the areas of production, operation and engineering technology to support customers in achieving the efficiency and availability of complex plants and components. The focus is on long-term and constructive cooperation with satisfied customers, which is why we employ experts worldwide.

» Services

- » Customer consulting in project development
- » Feasibility studies – project finance
- » Operational support and training
- » After-Sales service
- » Modernisation, conversion





» History

»Innovation is a BERTSCH tradition«

Tradition can only come about and thrive through stability. Tradition itself as well as influences change and develop over time as part of the ethos of a company. The company is now in its third generation and is currently managed by Hubert Bertsch. The art lies not in identifying market opportunities but rather in actually using them. The BERTSCHgroup is ready to face the future thanks to its strength in innovation.

In order to create added value through tradition, it is not enough to re-hash past success or rediscover one set of skills or another. Rather, corporate culture, organisation and processes must be aligned with tradition. There must be a credible link between identity and products. Innovation means looking forward, recreating business models, and developing products for the future. Tradition, however, is based on traditional values and practices. We can prove to our customers every single day that it is possible to be a highly innovative company supported by great tradition. This is how BERTSCH learned from its beginnings as a coppersmith to become the high-tech equipment and plant engineering company it is today – consisting of BERTSCHenergy, BERTSCHfoodtec and BERTSCHlaska.

»Enthusiasm is part of our history«

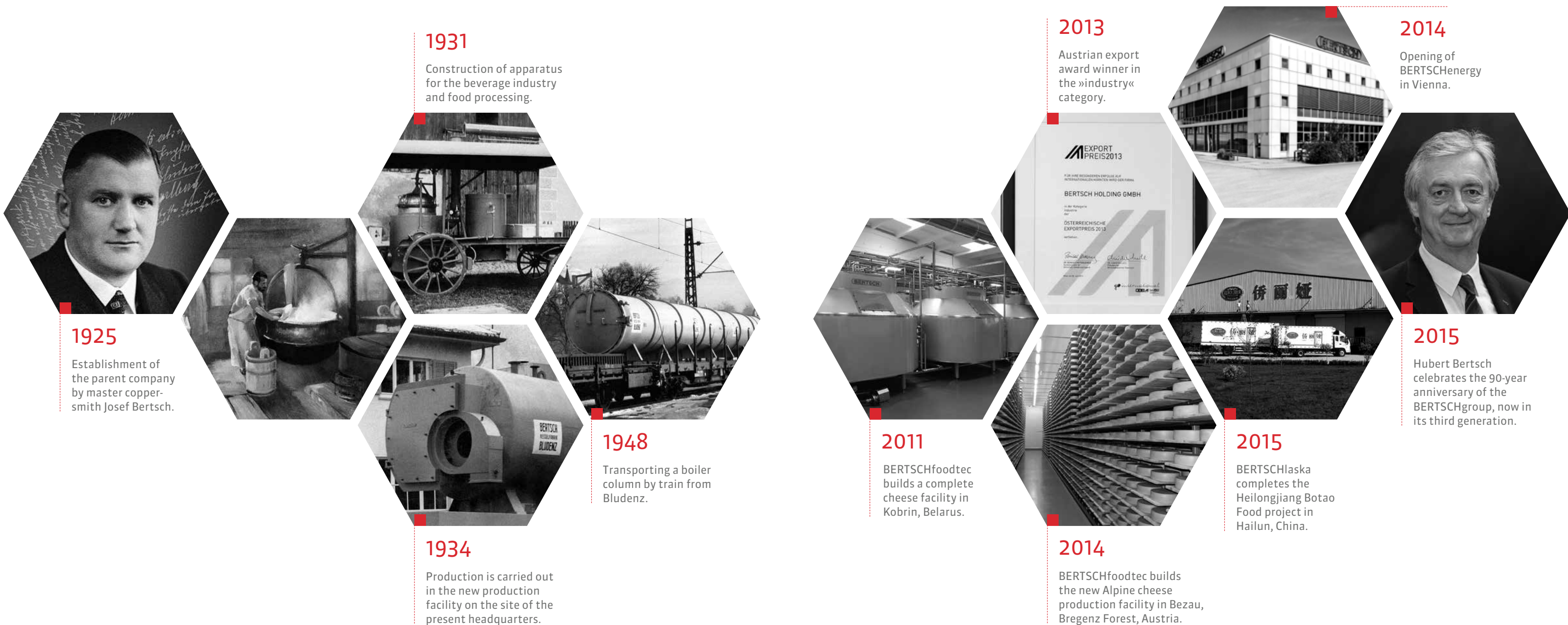
Change is part of every story, and for BERTSCH it means further development and thus opportunities. While the scope of the company for the first generation was regional, it had already become international by the time the second generation took charge. Today, BERTSCHgroup has an export share of over 80 % and has a strong presence in key markets through its subsidiaries.

Looking at the company's milestones, tradition counts for a lot.

»The best stories are written by success«

BERTSCHenergy stands for customised and innovative construction of power plants and industrial plants. BERTSCHfoodtec and BERTSCHlaska are competent and reliable partners in the modern dairy and meat industries. Numerous references worldwide speak for themselves!

Today, BERTSCH operates its divisions in a strategic manner whilst upholding the vision of the company as a whole.



1956

The first steam generator.

1962

The first water tube high-pressure steam boilers are built.

1965

Opening of the Vienna sales office. Construction of a new production facility in Linz.

1980

Austrian state emblem awarded to Senator Dr Josef Bertsch.

1980

Verleihung der Berechtigung zur Führung des Staatswappens der Republik Österreich

1980

Awarded the right to bear the official coat of arms of the Republic of Austria.

1980

Получение права на использование государственного герба Республики Австрия

1952

Development of the three-pass boiler.

1965

Upgrading the Bludenz headquarters.

1970

Expanding capacity with the production facility in Bludenz/Nüziders.

1984

Product storage tanks.

1985

Developing the BERTSCH cheese vat.

1994

Founding of BERTSCHlaska Produktions- und Handels GmbH with sales offices in several countries in Eastern Europe.

1996

The first BERTSCH HRSG plant.

2002

Process heat recovery systems.

2000

Innovation of waste heat recovery and waste heat technology using modular systems. Biomass heating plant in Augsburg.

1990

Double-flue three-pass boiler.

2003

Expanding production in Nüziders.

2010

Founding BERTSCHenergy Germany: plant and pipeline construction.

Contact

BERTSCHgroup EU

Bertsch Holding GmbH
T +43 5552 61 35-0
F +43 5552 61 35-70
Herrengasse 23
6700 Bludenz | Austria
bertschgroup@bertsch.at

BERTSCHenergy

Bertsch Energy GmbH & Co KG
T +43 5552 61 35-0
F +43 5552 663 59
Herrengasse 23
6700 Bludenz | Austria
bertschenergy@bertsch.at

Bertsch Energy Deutschland GmbH
T +49 6221 73901-0
F +49 6221 73901-66
Tullastrasse 20
69126 Heidelberg | Germany
bertschenergy@bertsch.de

Bertsch Polska SP. z o.o.
T +48 12 341 43 66
F +48 12 341 43 66
ul. J. Conrada 51
31-357 Krakau | Poland
bertschpolska@bertsch.pl

Bertsch Schweiz AG
T +41 71 855 23 52
F +41 71 855 23 53
Business Center
Flughafenstrasse 11
9423 Altenrhein | Switzerland
bertschschweiz@bertsch.ch

BERTSCHfoodtec

Bertsch Foodtec GmbH
T +43 5552 61 35-0
F +43 5552 61 35-73
Herrengasse 23
6700 Bludenz | Austria
bertschfoodtec@bertsch.at

Bertsch Foodtec Linz
Werk Oberösterreich
T +43 7221 73448-0
F +43 7221 73623
Am Kirchenholz 4
4063 Hörsching | Austria
bertschfoodtec.linz@bertsch.at

Bertsch Foodtec Italien
T +39 339 262 22 41
F +43 5552 61 35-73
Via Divisione Acqui, 4
41012 Carpi (Modena) | Italy
bertschfoodtec@bertsch.it

BERTSCHlaska

Bertsch-Laska Produktions-
und Handels-GmbH
T +43 1795 74-0
F +43 1798 56 22
Baumgasse 68
1030 Wien | Austria
bertschlaska@bertsch.at

Bertsch Laska Vilnius
T +370 523 756 55
F +370 523 756 54
Verkių g. 34
08221 Vilnius | Lithuania
bertschlaska@bertsch.lt

BERTSCHgroup GUS

Bertsch Laska Moskau
T +7 495 695 12 50
F +7 495 695 12 71
Korobejnikov per 22, str. 3
119034 Moskau | Russia
bertsch.moskau@bertsch-laska.ru

Bertsch Laska Krasnodar
T +7 861 259 69 58
F +7 861 259 69 58
ul. Krasnoarmejskaja/
Kusnetschnaja 116/2
350015 Krasnodar | Russia
bertsch.krasnodar@bertsch-laska.ru

Bertsch Laska Minsk
T +375 17 202 46 92
F +375 17 202 46 93
Prospekt Pobeditelej, 89/3 - 8E
220020 Minsk | Belarus
bertschlaska@bertsch.by

Bertsch Energy Minsk
T +375 17 369 54 13
F +375 17 202 46 93
Prospekt Pobeditelej, 89/3 - 8C
220020 Minsk | Belarus
bertschenergy@bertsch.by

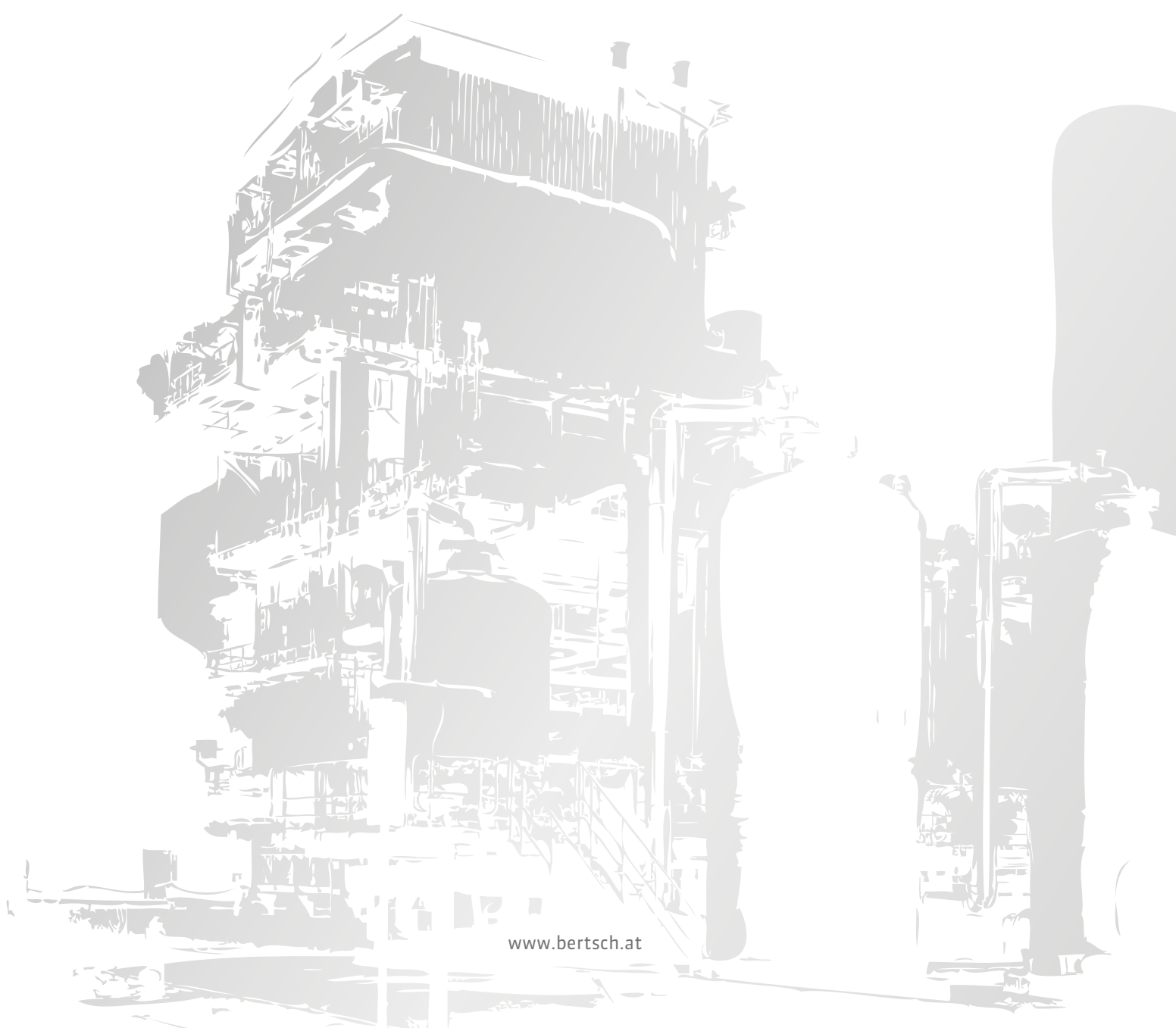
Bertsch International OOO
T +375 17 202 46 93
F +375 17 202 46 93
Prospekt Pobeditelej, 89/3 - 8D
220020 Minsk | Belarus
bertschinternational@bertsch.by

Bertsch Laska Kiew
Vul. Wikentija Chwojki 18/14
04080 Kiew | Ukraine
bertschlaska@bertsch.ua

»Only **new ideas**
give the future a future.«



www.bertsch.at



www.bertsch.at